

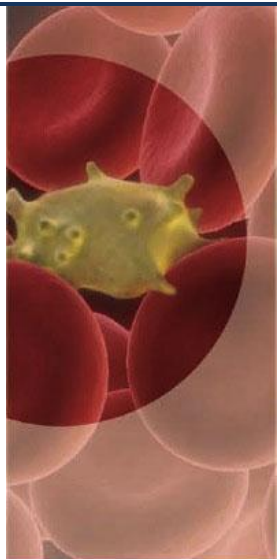
## News from Your Partner for Orthopedic Solutions



## Feature Solutions

### Autologous Conditioned Plasma Delivery System

Autologous blood products have created a growing interest for use in a number of orthopedic therapies. The healing effects are supported by growth factors released by platelets. These growth factors induce a healing process wherever they are applied.



### Features and benefits

- Producing ACP (Autologous Conditioned Plasma) with the Arthrex system is performed within minutes. Typical platelet rich plasma (PRP) systems require 30 minutes to process the blood for application, thereby delaying treatment and increasing the cost of the procedure.
- The ACP System can be used in clinic or under sterile conditions in a hospital. The unique double syringe design allows for convenient and safe handling. The preparation process takes place in a closed system.
- The cost of the ACP System is more affordable than conventional PRP systems.
- The IRAP centrifuge can be converted to work with the ACP System.

Contact your Rep for more information  
or log onto our website at

<http://www.innovativeanimalproducts.com/autologous-conditioned-plasma.php>

Brochure:

[www.arthrexvetsystems.com](http://www.arthrexvetsystems.com)

## VTS Osteoallograft Mix Now Available through Innovative Animal Products

Osteoallograft™ Orthomix™ is natural, real bone allograft designed specifically for veterinary use. It consists of osteoinductive De novo Matrix (DBM) and osteoconductive cancellous bone chips. Using bone allograft allows you to avoid autograft procurement and associated risks. Also, because it not only provides osteoconductive scaffold but also native, osteoinductive growth factors (BMPs), you will achieve faster healing and better outcomes.

stronger bone healing compared with using bone substitutes. <sup>1</sup>

The demineralization of allograft during tissue processing allows for immediate access to the growth factors (BMPs) inherent in n is placed into the surgery site. This results in an immediate beginning of the healing process and helps to make allograft as effecti



**Orthomix®–Standard**



DBM with cancellous chips **<4.0 mm**

Large fracture voids  
Large mal- or non-unions  
Large bone loss cases

**Orthomix®– Fine**



DBM with cancellous chips **<2.3 mm**

Fracture voids  
Mal- or non-unions  
Bone loss cases  
TPLOs and TTAs

**Orthomix®– Ultra Fine**



DBM with cancellous chips **<0.7 mm**

Fractures with no voids  
Small breeds  
Arthrodeses  
Hip Implants

For more information contact your local rep or log onto our website  
<http://www.innovativeanimalproducts.com/osteoallograft-orthomix.php>

## Lab and Conference Schedule 2011



### Tightrope CCL Labs

Date	Location	Exhibit/Lab
May14	Boise ID	Wet lab – openings still available
Sept 17	Atlanta GA	Wet lab
Oct 8	Denver CO	Wet lab
Oct 22	San Francisco	Wet lab

#### MINIMALLY INVASIVE TECHNIQUE FOR TREATING CCL INJURIES

This laboratory will provide a didactic section covering the principles of the Tightrope CCL materials, a step-by-step presentation of the surgical technique, and presentation of data regarding the clinical results of the technique from a prospective cohort (TPLO) study in canine patients. The laboratory period will include hands-on training in which each person can perform the technique on a cadaveric canine stifle.

To register: [www.arthrexvetsystems.com](http://www.arthrexvetsystems.com) Call 888.551.4394

### NEW! SwiveLock Knotless Anchor & Corkscrew CCL Repair Labs

Date	Location	Exhibit/Lab
------	----------	-------------



July 16	Scottsdale AZ	Wet lab
<b>NOVEL TECHNIQUES FOR TREATING CCL TEARS AND THE MENISCUS</b> This course is a lecture/laboratory experience with the objective of providing in-depth exposure to common rear limb instability problems veterinary practitioners experience in daily practice. Learn and practice the concept, techniques and instrumentation of selected joint stabilization procedures in the canine cadaver pelvic limb. Repair cranial cruciate ligament (CrCL) tears, meniscal injuries, collateral ligament disruption, patellar luxation, tarsal collateral ligament injury using easy-to-learn techniques and the latest specialized implant. This course will cover the isometric sites for suture placement.		

To register: [www.arthrexvetsystems.com](http://www.arthrexvetsystems.com) Call 888.551.4394



**Arthroscopy Labs: Basic – Intermediate – Advanced**

Date	Location	Exhibit/Lab
June 17-19	Scottsdale AZ	Residence Course
July 23	Scottsdale AZ	
Aug 18-19	Naples FL	
Nov 3-5	Chicago IL	ACVS
Dec 3	Los Angeles CA	

**ARTHROSCOPY**  
 Discussion of equipment needs and care, specific indications and methods to consistently achieve successful visualization and management of joint disorders will be discussed in a lecture format. Participants will learn to gain access to the elbow and shoulder, develop working portals and become familiar with instruments available for treatment of intra-articular lesions in a cadaver limb.

To register: [www.arthrexvetsystems.com](http://www.arthrexvetsystems.com) Call 888.551.4394



**FIXIN**

**FIXIN Labs**

Date	Location	Exhibit/Lab
Aug 3	Boston	Dry Lab
Oct 15	Scottsdale	Dry Lab
Nov 3-5	Chicago IL	ACVS
Nov TBD	Honolulu HI	HI State Meeting
Dec 14	New York Area	Dry Lab

**INTERNAL FIXATION FEATURING THE FIXIN SYSTEM**  
 The course is designed to introduce the Veterinary Surgeon to the new FIXIN internal fixation system explaining mechanics innovation, instruments, implants, surgical technique, technical errors and possible complications. A series of case histories also shows a selection of clinical cases selected from over 600 applications in four years that highlight the flexibility and simplicity of the system.

**For more information and case logs:** [www.traumavet.it](http://www.traumavet.it)

To register: [www.innovativeanimal.com](http://www.innovativeanimal.com) Call 888.551.4394

Have an innovative idea or solution? Need help with product development or marketing? Contact us!!!

**Innovative Animal Products**

6256 34th Avenue NW  
 Rochester, MN 55901  
 888.551.4394  
 507.281.8110  
[info@innovativeanimal.com](mailto:info@innovativeanimal.com)

[www.innovativeanimal.com](http://www.innovativeanimal.com)

**West Coast Rep** – AK, AZ, CA, HI, ID, MT, NV, OR, UT, WA, WY

**Exclusive distributor**  
**Arthrex Vet Systems**  
**FIXIN™ Locking Plate S**

[Lisa.toland@innovativeanimal.com](mailto:Lisa.toland@innovativeanimal.com)

**Central State Rep** – AR, CO, IL, IA, KS, LA, MN, MO, NE, NM, ND, OK, SD, TX, WI

[Jody.cushing@innovativeanimal.com](mailto:Jody.cushing@innovativeanimal.com)

**East Coast Rep** - AL, CT, DE, FL, GA, IN, KY, ME, NH, NJ, NY, NC, OH, PA, RI, SC, TN, VT, VA, WV

[Halliday.donaldson@innovativeanimal.com](mailto:Halliday.donaldson@innovativeanimal.com)

**To unsubscribe from this newsletter reply to this email with UNSUBSCRIBE in the subject line.**